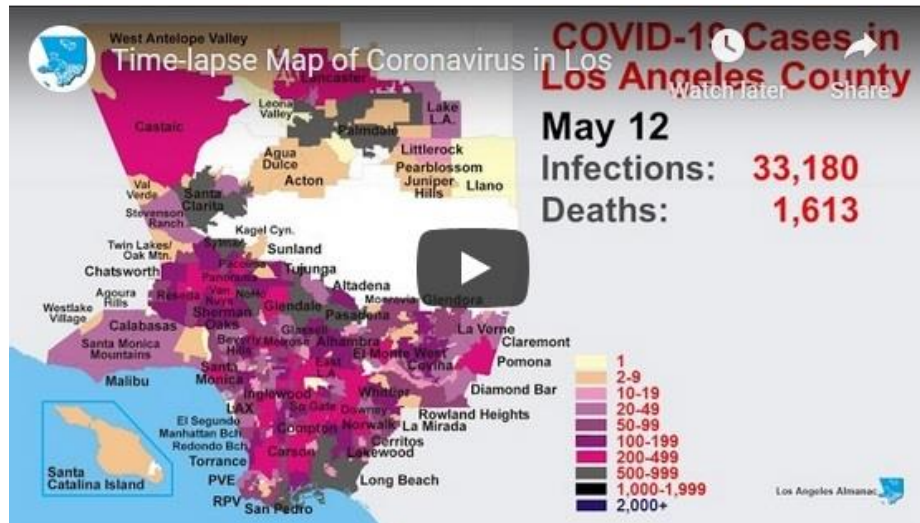


FOR IMMEDIATE RELEASE

Time-Lapse Map Video Shows Spread of Coronavirus Over Los Angeles County



LOS ANGELES, June 25, 2020 - The Los Angeles Almanac – which gathers and publishes online a wide variety of data and information about Los Angeles County– has created a time-lapse map video that animates the progression of coronavirus, or COVID-19, across the communities of Los Angeles County.

The video culled epidemiological data collected from the Los Angeles County Department of Public Health, Long Beach Health Department and Pasadena Public Health Department. It shows the spread of COVID-19 cases into almost every Los Angeles County community and how some are hit harder than others.

The video creators hope that the animation will help make the pandemic’s health impact on Los Angeles County a bit more vivid.

“I was inspired by a Youtube video by Wawustats with a time-lapse world map showing the spread of coronavirus across the globe,” said Gary Thornton, publisher of the Los Angeles Almanac. “That video made the pandemic less abstract for me and highlighted how serious it is. I wanted to do the same for our county.”

Los Angeles Almanac’s new video is found on Youtube.com at https://youtu.be/oPA-04DD_r0.

About Los Angeles Almanac

The Los Angeles Almanac (laalmanac.com) is an online reference providing statistical data, articles, graphics and maps about the people, places and stories of Los Angeles County.

end

Contact: Gary Thornton, Publisher,
Los Angeles Almanac, laalmanac.com
Email: la.info@laalmanac.com